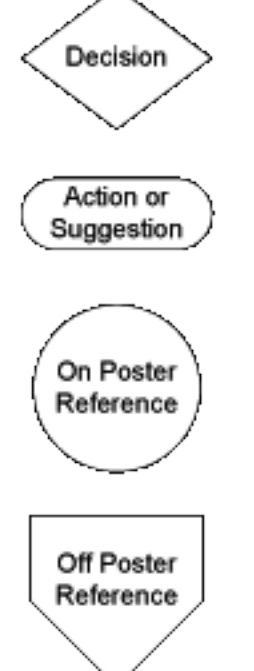


Please Read

The author has done his best to provide accurate and up-to-date information in this Boot Failure Troubleshooting Flowchart, but he cannot guarantee that the information is correct or will fit your particular situation.

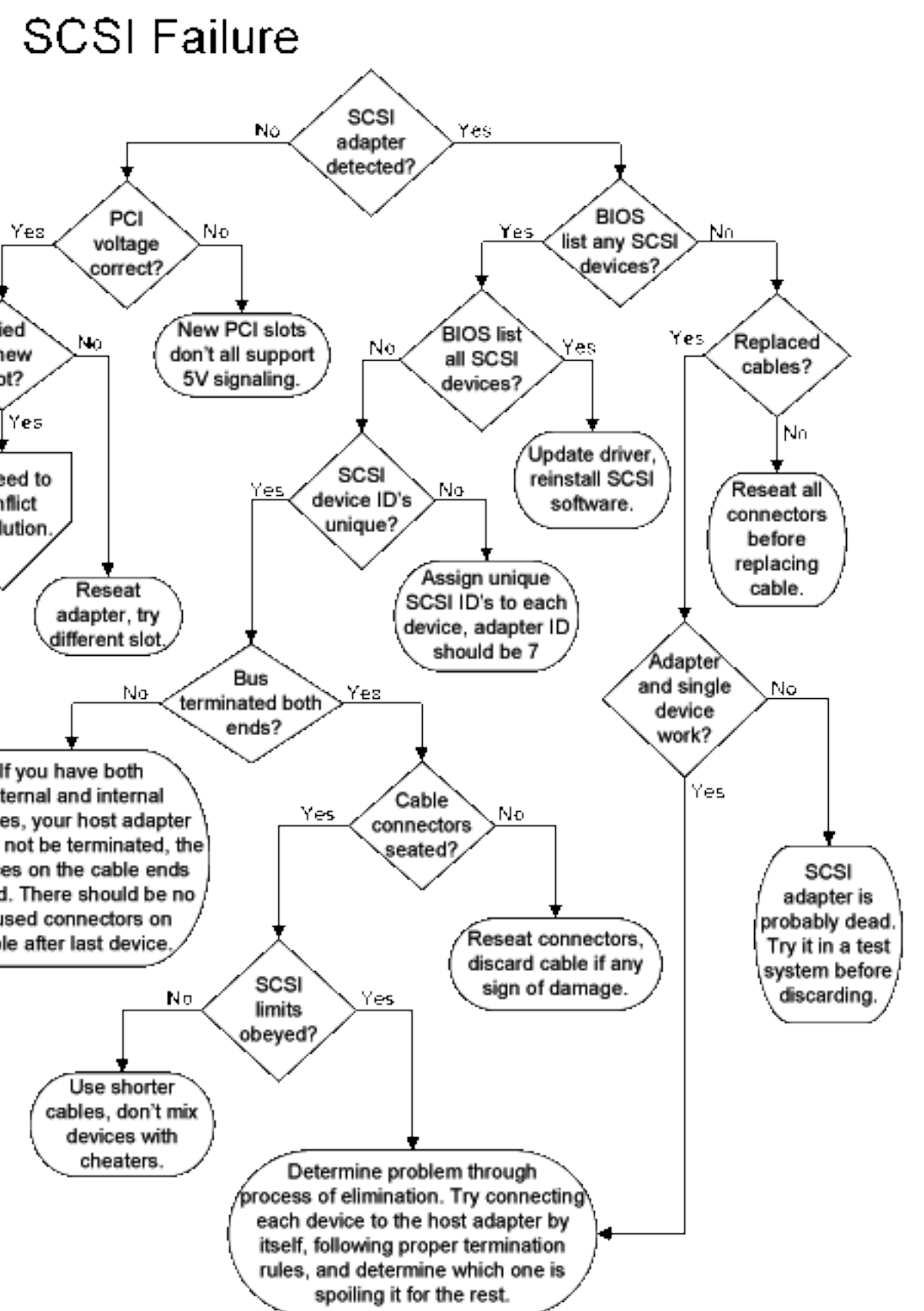
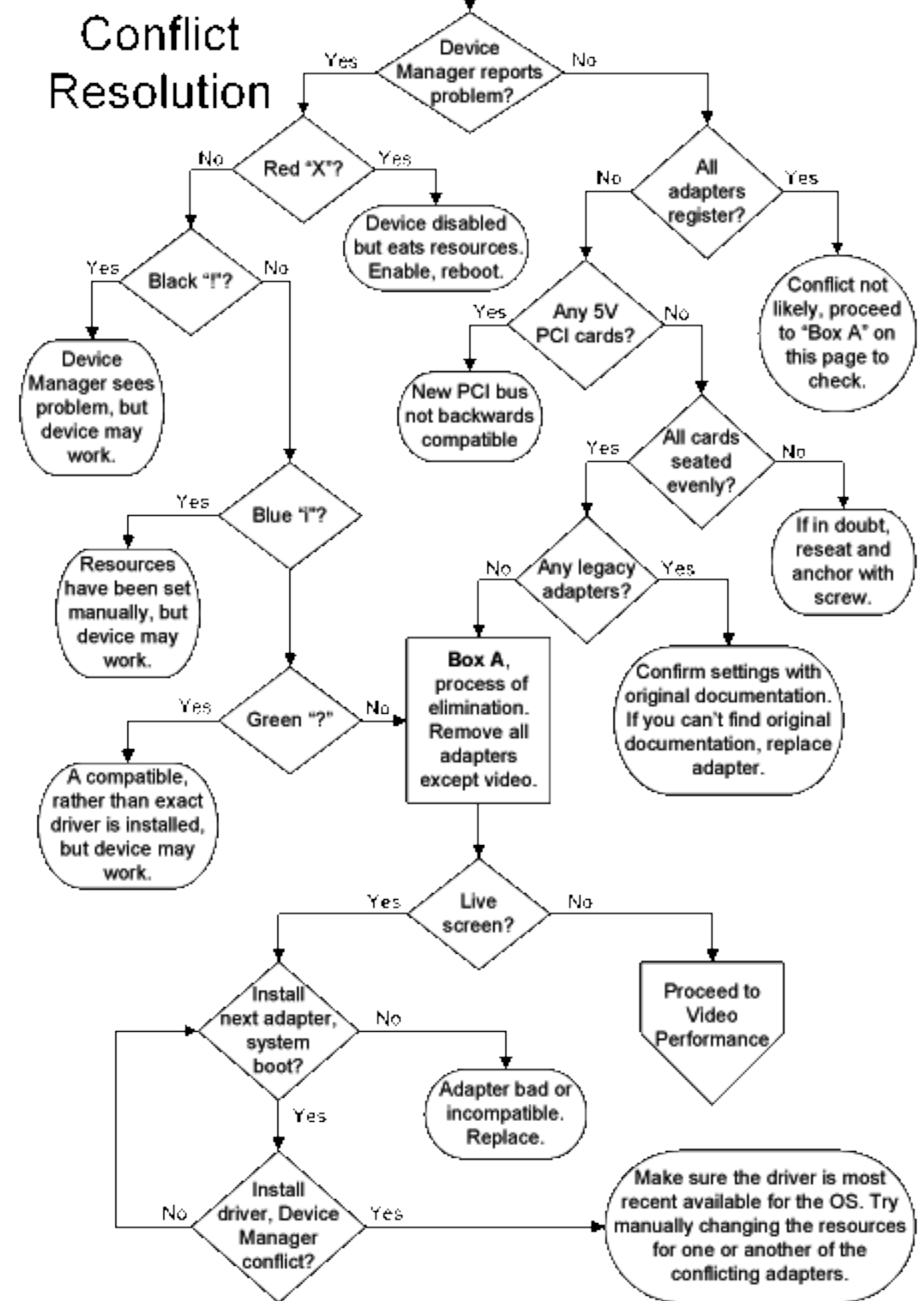
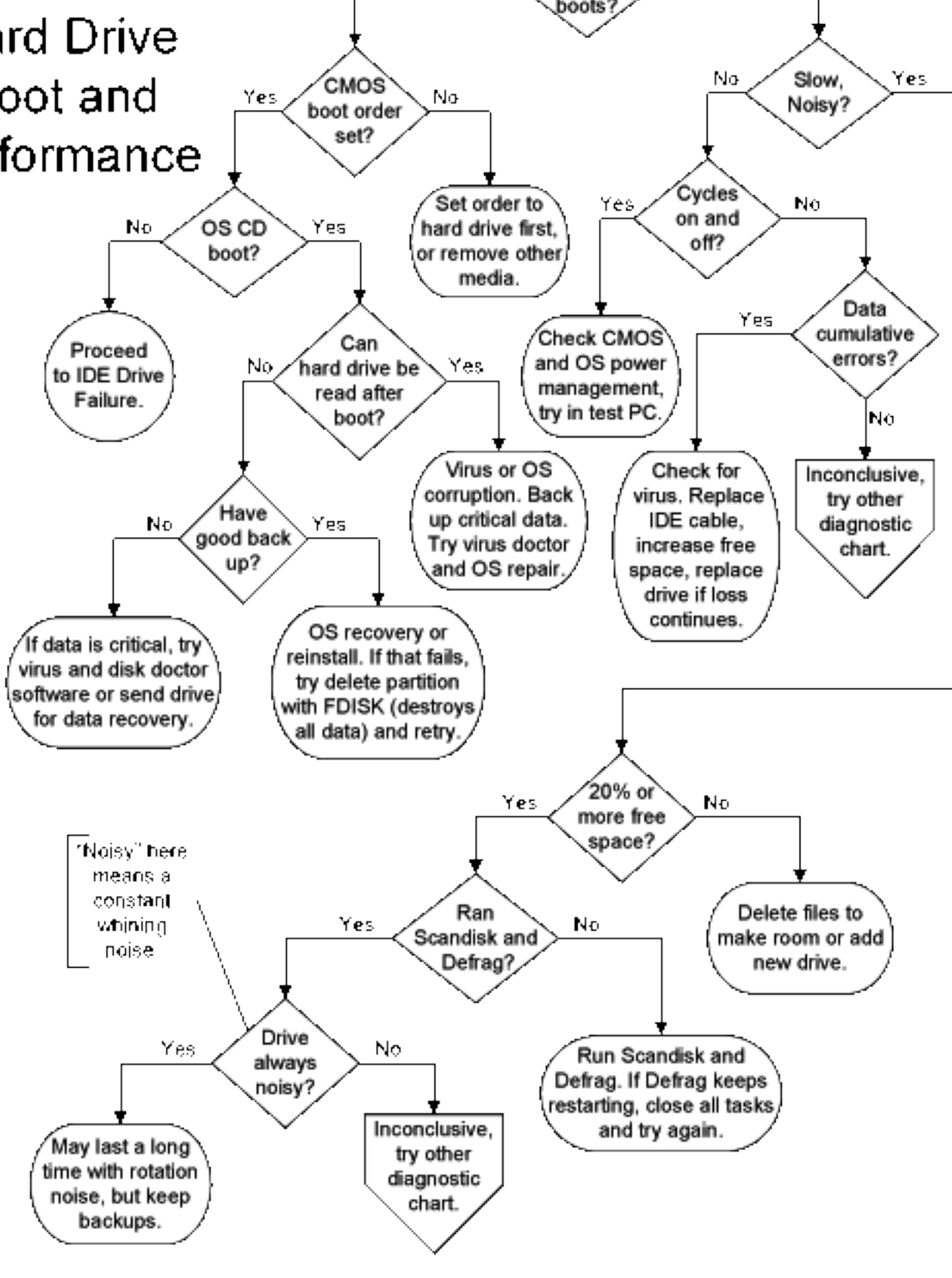
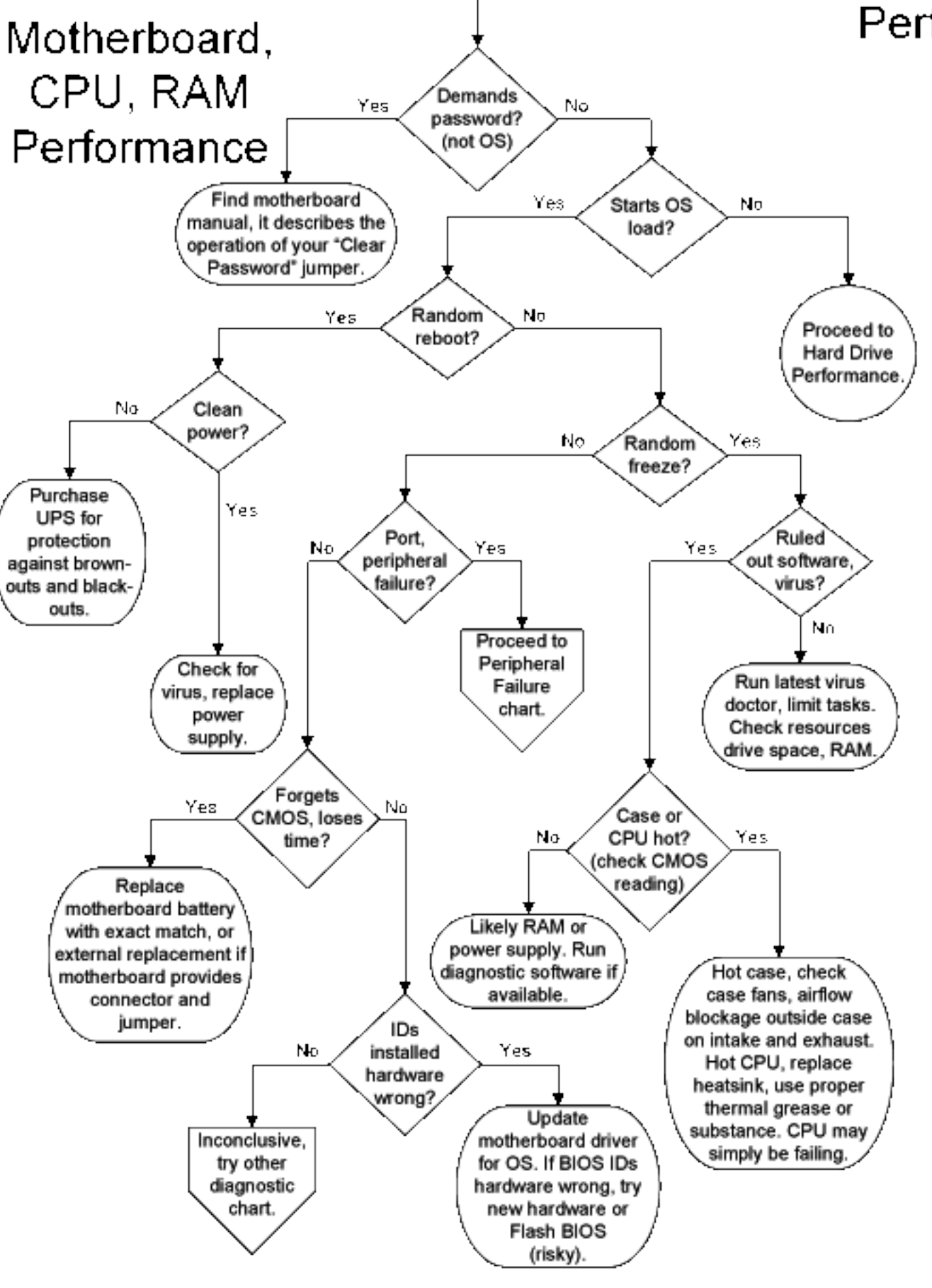
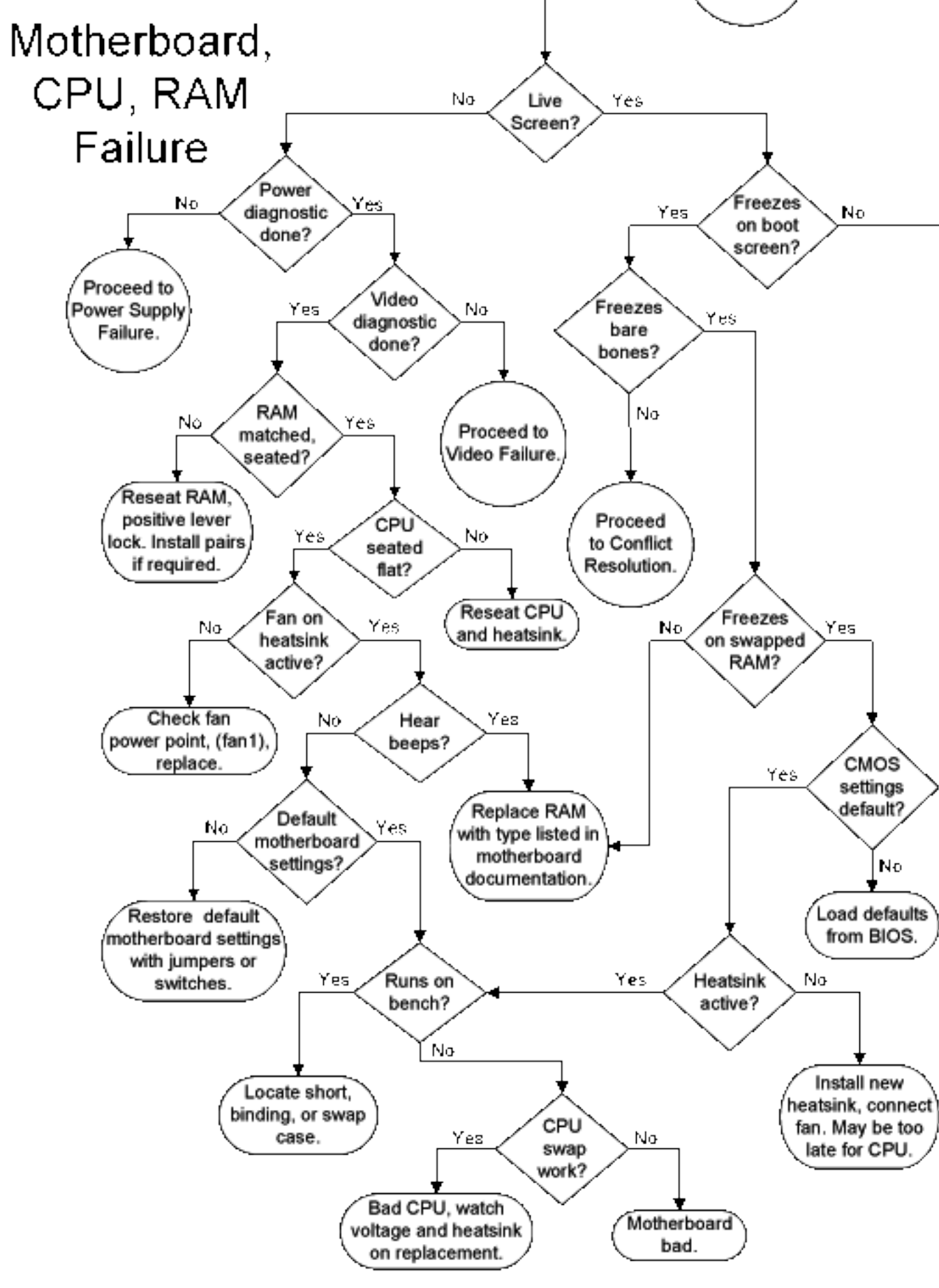
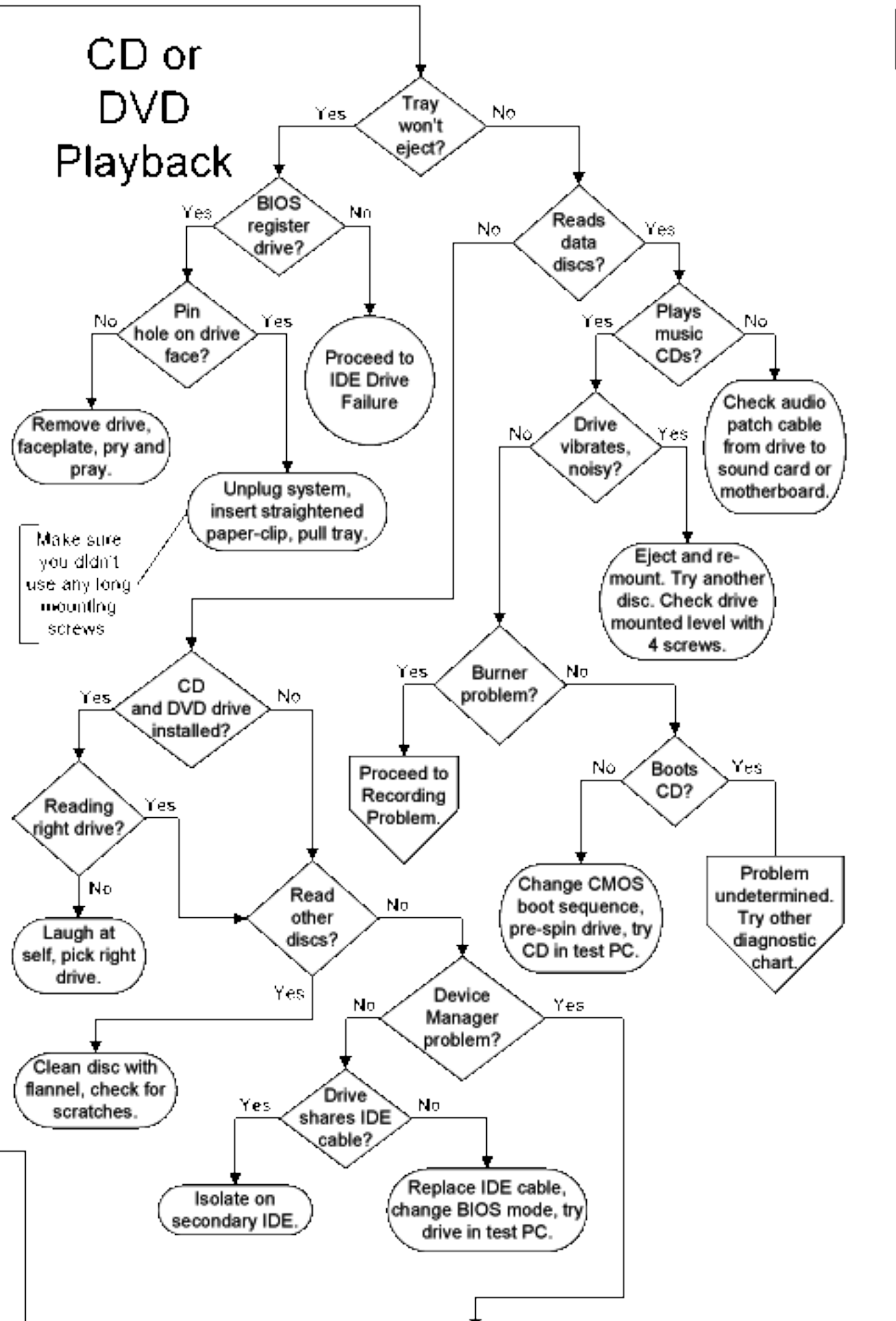
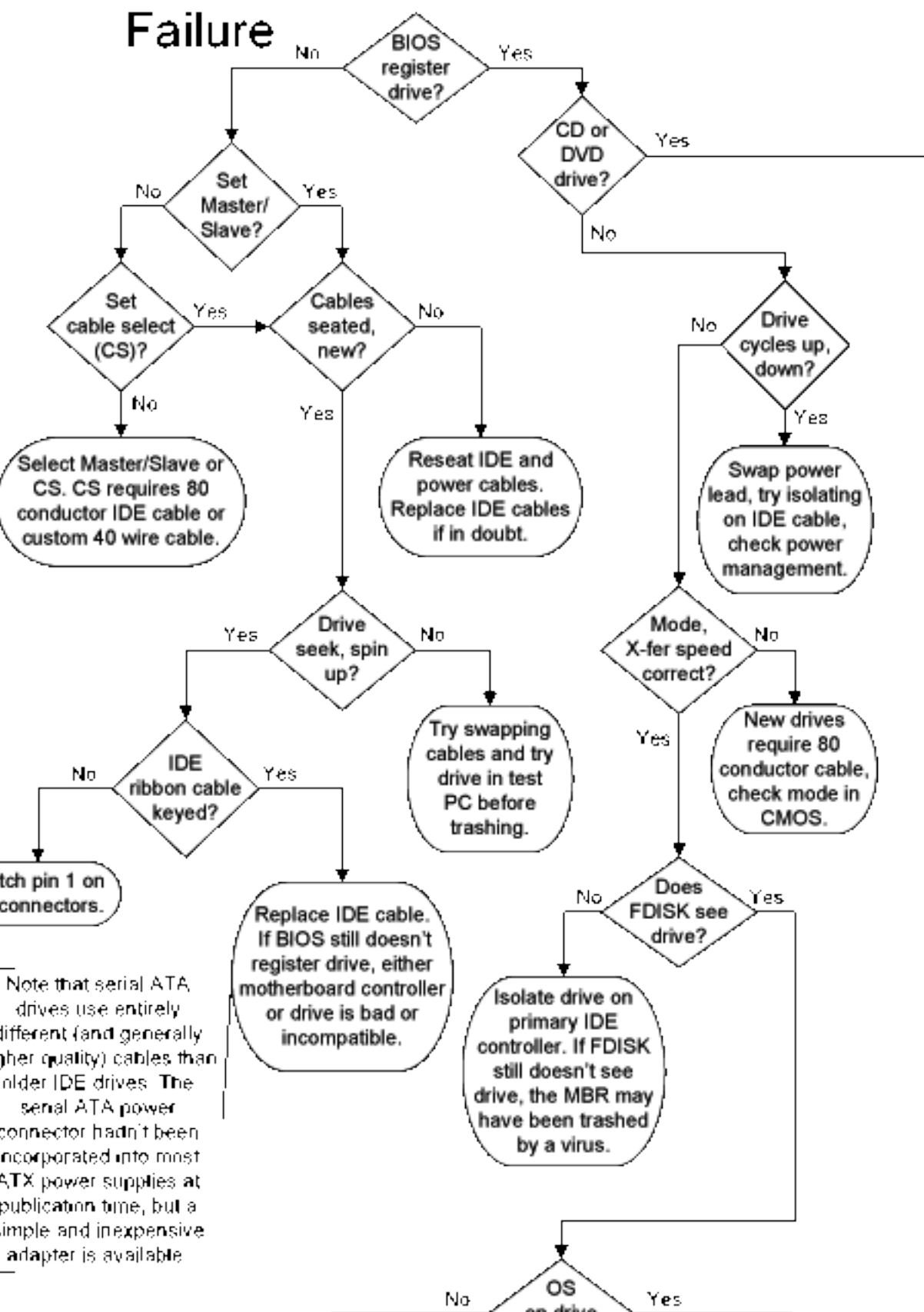
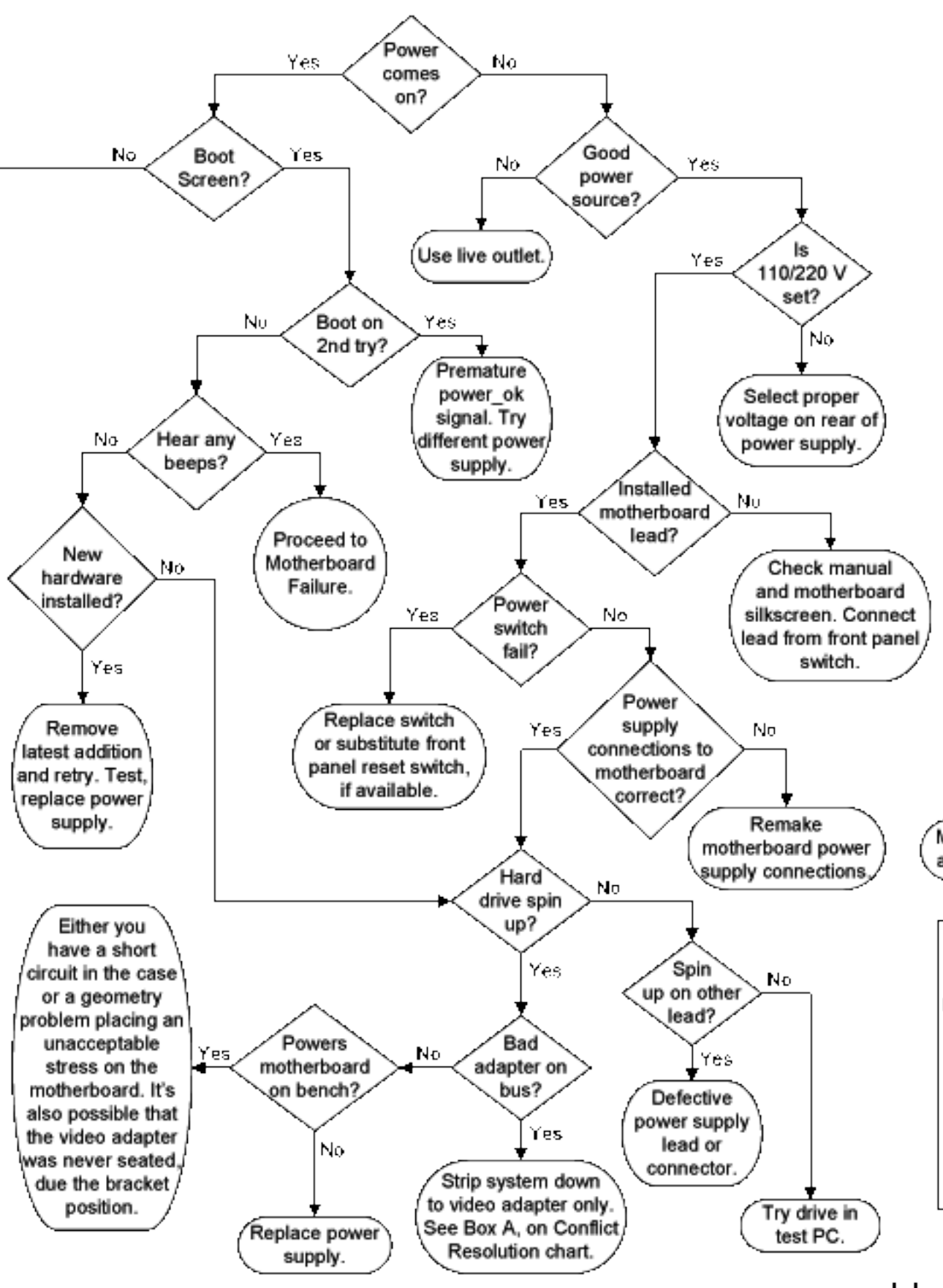
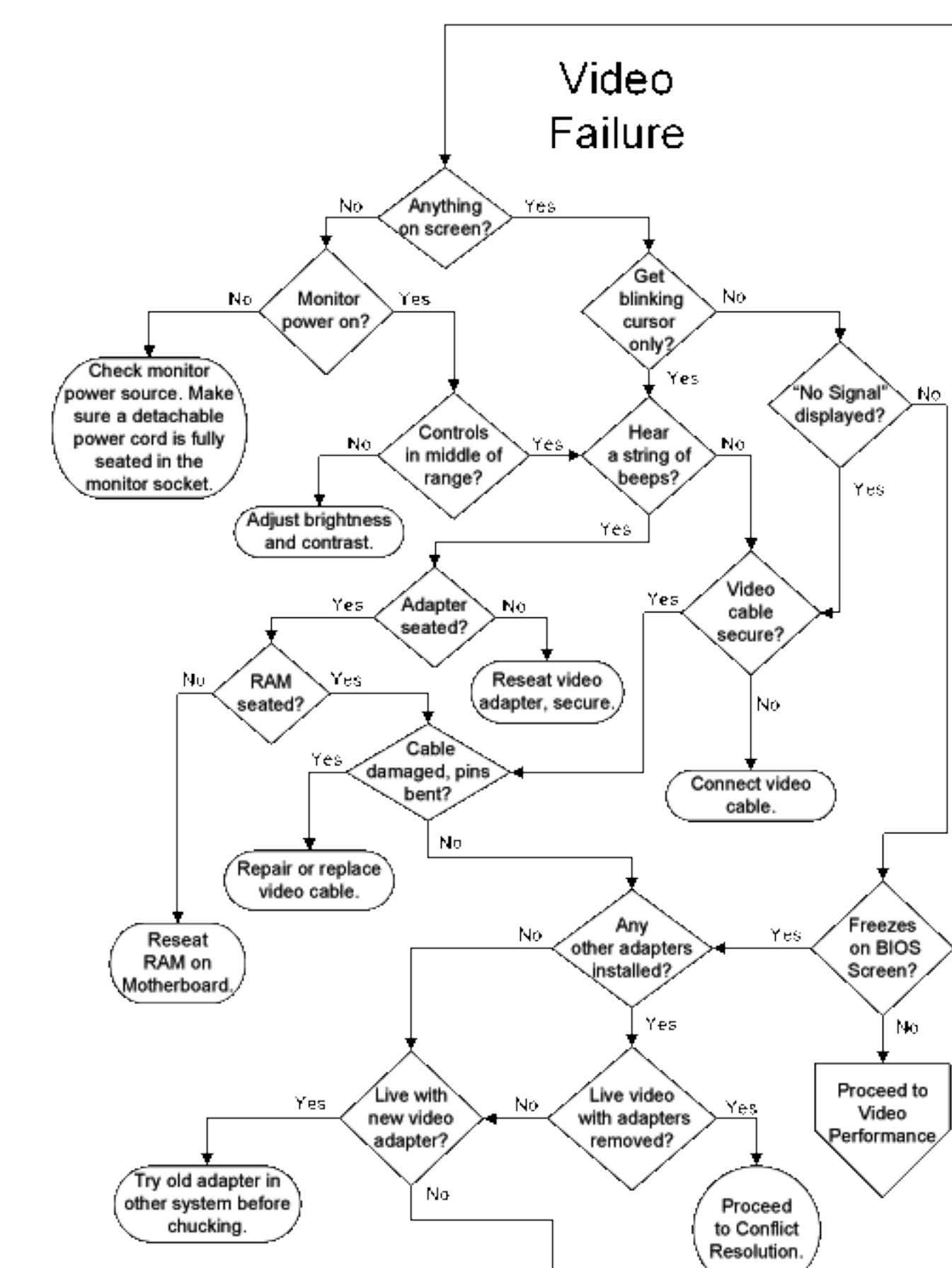


Power Supply Failure

IDE Drive Failure

CD or DVD Playback

Video Failure



20 Pin Power Supply Motherboard Connector

Table with 2 columns: ATX Version 1.2, Pin numbers and voltages.

Video Pinout

- List of video pinout colors and their functions: 1 - Red, 2 - Green, 3 - Blue, 4 - Monitor ID, 5 - Ground, 6 - Red Return, 7 - Green Return, 8 - Blue Return, 9 - No-Connection, 10 - Sync Ground, 11 - Monitor ID, 12 - Monitor ID, 13 - Horizontal-Sync, 14 - Vertical-Sync, 15 - Monitor ID.

SCSI ID's

Table for SCSI ID's with columns ID, ID3, ID2, ID1, ID0 and rows 0-15.

Standard Color Coding

Table for Standard Color Coding with columns Color and Voltage.

LIST OF FLOWCHARTS FROM BOOK "COMPUTER REPAIR WITH DIAGNOSTIC FLOWCHARTS" NOT APPEARING ON POSTER

- List of flowcharts: VIDEO PERFORMANCE, CD OR DVD RECORDING PROBLEM, MODEM FAILURE, MODEM PERFORMANCE, SOUND FAILURE, SOUND AND GAME CONTROLLER PERFORMANCE, NETWORK FAILURE, PERIPHERAL FAILURE.

A note about the book. The book was not designed to be read from cover to cover. At the core of the book are seventeen diagnostic flowcharts...